

EUROPEAN TERRITORIAL COOPERATION

Alpine
SPACE

Alpine Space Programme 2007-2013

**Going further together!
Exchange with the Alpine Space projects**

AdaptAlp

Marion Damm – Bavarian State Ministry of the Environment and Public Health

Bolzano/Bozen 3rd April 2009



The programme is co-funded
by the European Regional
Development Fund

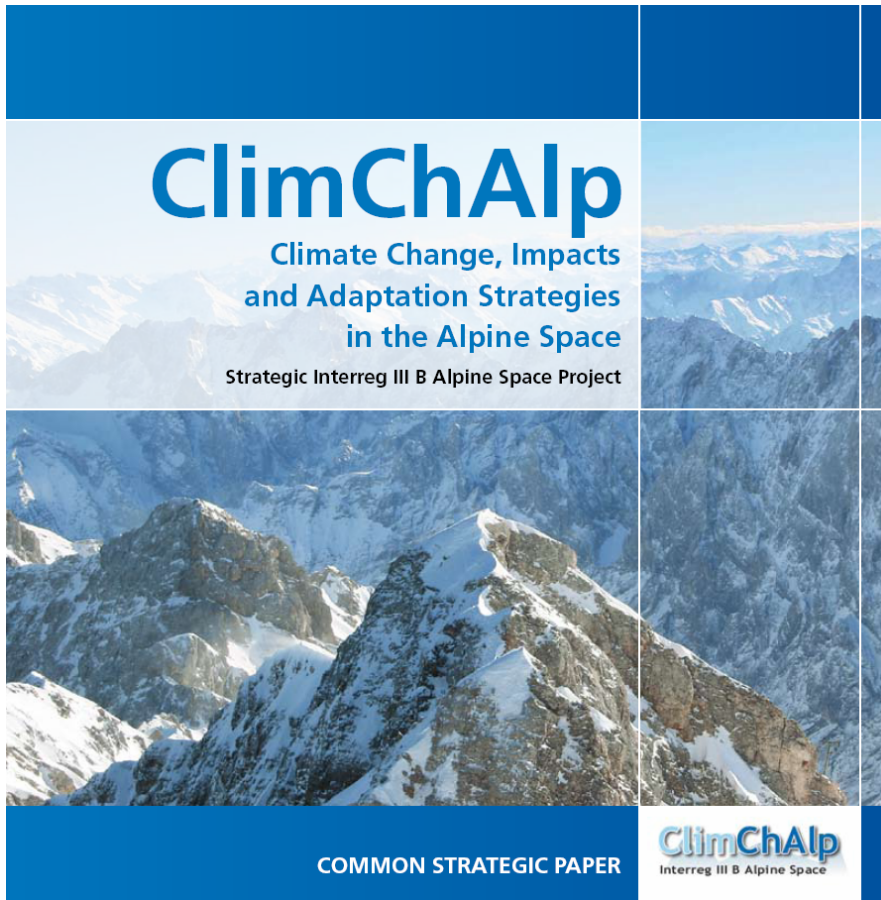
Adaptation to Climate Change

Interreg IIb Alpine Space – ClimChAlp



- State of the art climate change scenarios, hazard assessment and risk management in Alpine Space
- Establish networks
- Initialize risk dialogue

Major Outcomes



Databases:

PLANALP database

RiskNAT database

Database on landslide monitoring

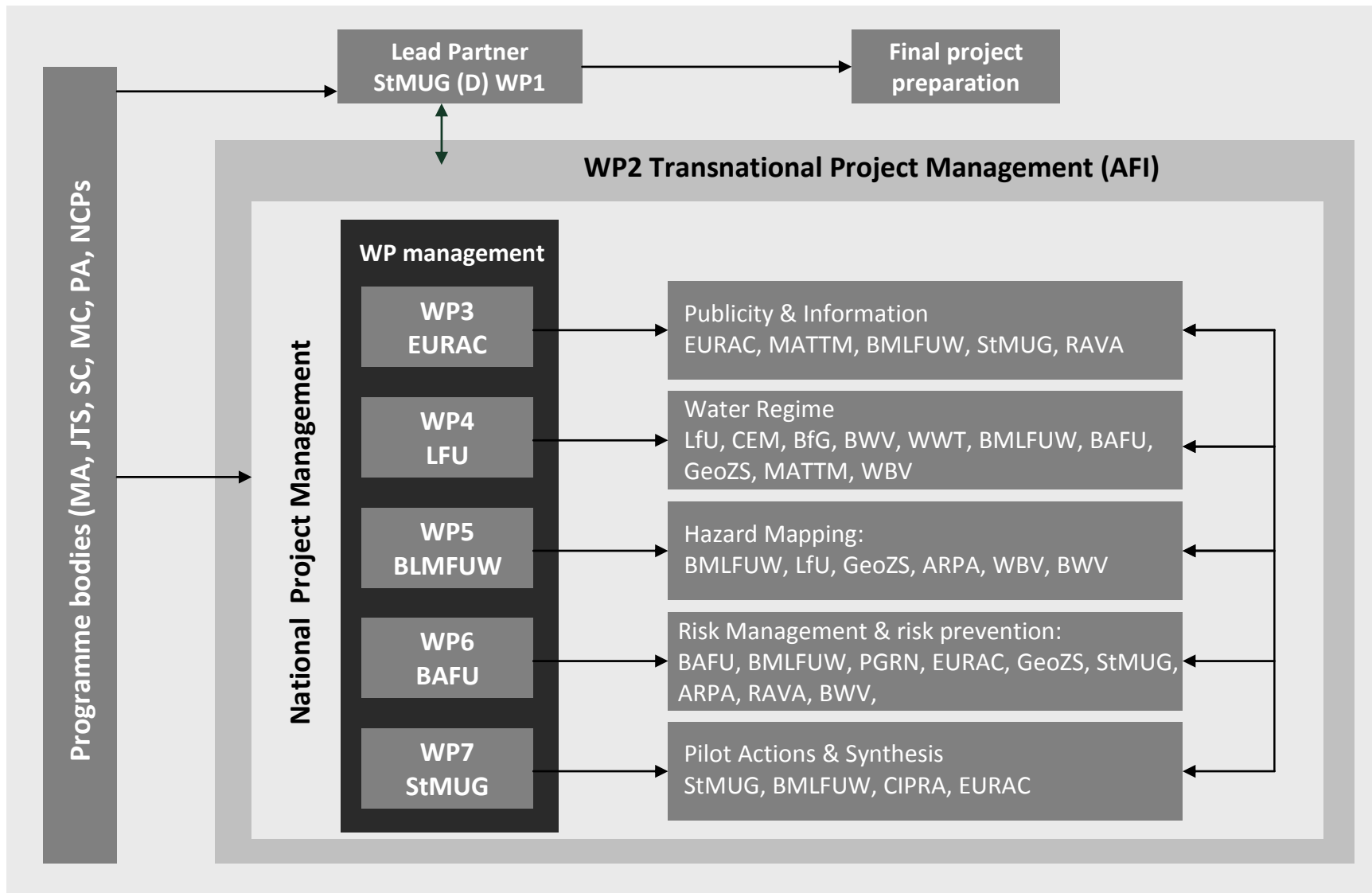
Flexible Response Network

Common Strategic Paper

Derivation of adaptation strategies

Identification of gaps and needs

AdaptAlp



AdaptAlp

Content & Objectives

Scientific-oriented Work Package (WP4)

- Collecting and harmonizing run-off data for trend analysis
- Developing high resolution climate scenarios for the AS
- Modeling soil erosion
- Bias-correction methodology

⇒ **Calculating and evaluating impacts of climate change**

AdaptAlp

Content & Objectives

Practitioner-oriented Work Packages (WP5 and WP6)

- Evaluation and harmonization of hazard assessment procedures (geological and hydrological hazards): terminology, creation of hazard maps, definition of design events, etc.
- Improving risk prevention and management by developing and testing a management tool, developing education modules for disaster manager, improving forecasting models, establish network between disaster managements etc.

⇒ **collecting best practice examples, derive recommendations**

AdaptAlp

Content & Objectives

Synthesis (WP7)

- “Applied” Synthesis: Pilot Actions
- “Written” Synthesis: Extended Scientific Report + Common Strategic Paper

⇒ **provide practitioners and decision-makers with information on meaningful adaptation measures and strategies, improve disaster management and raise awareness at local and regional level**

AdaptAlp

Pilot regions

WP4	Rivers: Alpine Rhine, Soca, Inn, Upper Rhone
WP5	Gasen/Haslau in Styria, Valle d'Ossola, Montafon, Bregenzer Wald, River Adige, River Soca
WP6	Aosta Valley, Piemont, Bovec, Vorarlberg, Tirol, Bavaria, Carinthia, Rhone Alpes, Zentralschweiz
WP7	+ Oberallgäu

AdaptAlp

Results & products foreseen

- Publication of guideline: 'Hazard Mapping Adapted to CC'
- State-of-the-art report on adaptation of natural hazard risk management to CC in the Alpine Space
- Transnational homogenized data base – run-off data
- Climate scenarios (CLM <10 km, ENSEMBLES bias-corrected)
- Multilingual glossary on geological hazards
- Optimized risk management tool
- Network for training of risk managers; new education modules
- Recommendations for adaptation

AdaptAlp

Upcoming events on Climate change

Expert Hearing, April 24 in Vienna (during EGU)

“Design Events for water related hazards: Adaptation to Climate Change”

Experts and decision-makers discuss on influences of climate change on protection measures and the definition of statistical design events.



Thank you for your attention!

www.adaptalp.org

Contact:

marion.damm@stmug.bayern.de

Phone: +49 (0)89 9214 2373